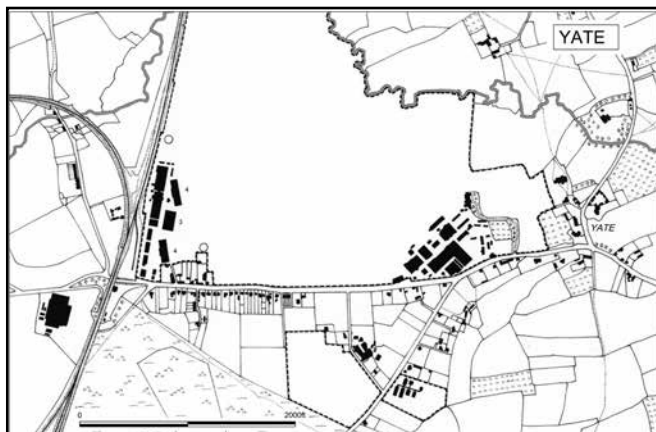
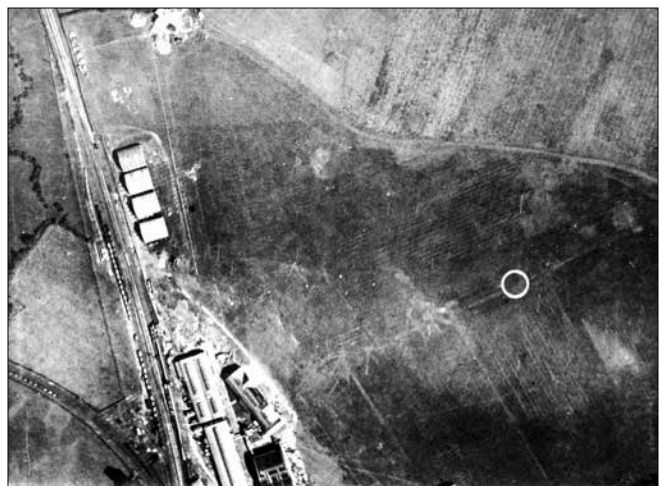


YARMOUTH		2 miles from Great Yarmouth railway station			
126/134 : TG 532045 : Norfolk : 85 acres : 1200 x 300 yards : 10 feet amsl.					
Seaplane Station for HD and Marine Operations RNAS/RAF 4.1913 – 4.1919 : Aerodrome for HD and Marine Operations RNAS/RAF 1914 – 7.1919. Landing ground relinquished 28.8.1919. Relinquishment of seaplane station notified 13.11.1919.					
Two 1912 pattern aeroplane/seaplane sheds, 65 x 70 feet, two aeroplane/seaplane sheds, 70 x 70 feet, plus two Type F seaplane sheds, 200 x 100 feet.					
Seaplane War Flights RNAS/RAF	4.1913	from	formed	5.1918	to re-designated 428, 429, 454 & 455 Flts
Landplane War Flight RNAS/RAF	1914		formed	25.5.1918	re-designated Temporary D Flight
Flying Boat War Flights RNAS/RAF	4.1917		formed	5.1918	re-designated 324 & 325 Flts
4 Group HQ*	1.4.1918		formed	6.1918	Cliff House, Felixstowe*
324 & 325 Flts	5.1918		formed from existing boat flights	20.8.1918	absorbed into 228 Sqn
428 & 429 Flts	5.1918		formed ex Short 184/320 War Flight	20.8.1918	absorbed into 229 Sqn
454 Flight	25.5.1918		formed from existing Baby flight	20.8.1918	absorbed into 229 Sqn
Temporary D Flight	25.5.1918		formed from existing landplane flight	20.8.1918	re-designated 212 Sqn 490 Flt
455 Flight	15.6.1918		formed	20.8.1918	absorbed into 229 Sqn
557 & 558 Flts	26.6.1918		formed	20.8.1918	absorbed into 212 Sqn
326 Flight	15.7.1918		formed	20.8.1918	absorbed into 228 Sqn
212 Sqn 490, 557 & 558 Flts	20.8.1918		formed from existing flights	7.3.1919	Dover (Swingate Down) as cadre
228 Sqn 324, 325 & 326 Flts	20.8.1918		formed from existing flights	30.4.1919	Brough as cadre
229 Sqn 428 & 429 Flts	20.8.1918		formed from existing flights	3.3.1919	Killingholme as cadre
229 Sqn 454 Flt	20.8.1918		formed from existing flight	30.9.1918	disbanded
229 Sqn 455 Flt	20.8.1918		formed from existing flight	31.10.1918	disbanded
73rd Wing HQ*	20.8.1918		formed	1.5.1919	disbanded
212 Sqn 558 Flt	8.1918		detached from parent unit	8.1918	Holt
212 Sqn 558 Flt	8.1918		Holt	8.1918	re-joined parent unit
Storage Detachment*	3.1919		formed	1919	disbanded
273 Sqn cadre*	6.1919		Burgh Castle	5.7.1919	disbanded
Commander-in-Chief, Naval Base Lowestoft RNAS : 73rd Wing, 4 (Operations) Group, SE Area 1918					



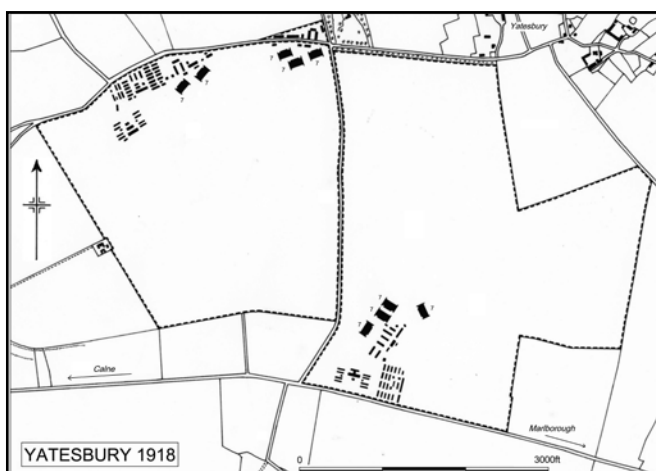
YATE
The northern tip of the aerodrome has been omitted in this plan so that the location of the two domestic sites, to the south, could be shown.



YATE
The western boundary of 3 (W) ARD's aerodrome, with the landing circle standing out clearly.

YATE		1 mile from Yate railway station			
156/172 : ST 715829 : Gloucestershire (Avon) : 193 acres : 1100 x 800 yards : 250 feet amsl.					
Aircraft Repair Depot and Engine Repair Depot RFC/RAF 1916 – 1919.					
Two 1915 pattern Flight Sheds, 210 x 70 feet.					
Western Aircraft Repair Depot	31.5.1917	from	formed, absorbing the CARD Kennington	12.10.1917	to re-designated 3 (Western) Aircraft Repair Depot
3 (Western) Aircraft Repair Depot	12.10.1917		formed ex existing ARD	5.1920	disbanded
Note – In 1918 the depot handled Bristol F2Bs, Sopwith Camels, Sopwith Snipes and Sopwith Bombers.					
SW Area 1918 : 7 Group 1920					

YATESBURY
The massive area covered by the twin aerodromes is evident in this plan. The western pair of sheds on the western aerodrome still survive.



YATESBURY
An RE8 and a pair of DH6s on the eastern No.2 aerodrome. The 1916 pattern GS sheds on that aerodrome were unusual employing a polygonal roof trusses with a flatter than normal apex.

