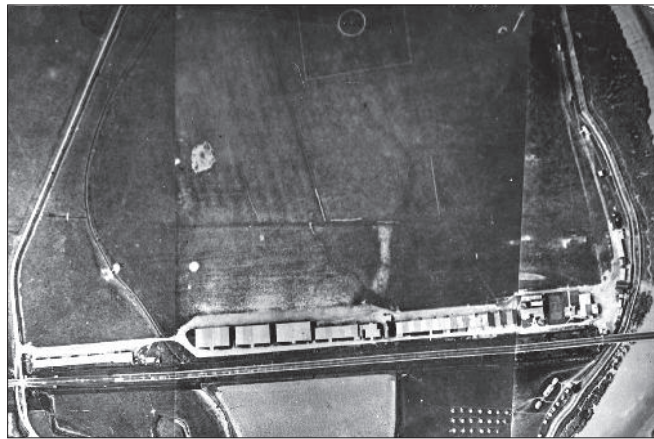


SHOOTERS HILL	Wood Lodge, Shooters Hill, London SE18
171/177 : TQ 445765 : London (London Borough of Greenwich).	
Kite Balloon Station for 3 (Balloon) Apron Squadron RFC/RAF 1918 – 1919.	
7 Balloon Wing 1918	

SHIPTON

Like many NLGs, this had an L shape and it had been created by amalgamating three small pre-war fields. The plan is based on a 1917 sketch map of the site, which contemporary OS maps show as having an area of 46 acres. The information in TNA AIR1 453/15/312/26 Pt.4 gives the area as 36 acres and it seems likely that this was the result of a clerical error.

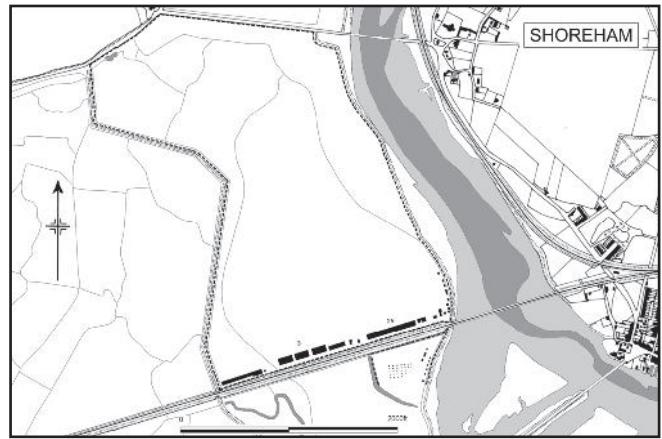
The site was not taken up for WWII use as an aerodrome but a site at Shipton, possibly this, was used by 60 Maintenance Unit, responsible for the salvage of crashed machines in the north of Yorkshire from 1940 onward.



SHOREHAM

The majority of the aeroplane sheds, laid out alongside the railway on the station's southern boundary, dated from pre-war years, when they had been used by the machines of the civilian schools occupying the aerodrome.

:A. Jenks



SHOREHAM

The aerodrome contained several drainage ditches and it seems possible that these, like those at Eastbourne, were boarded over as a safety measure.

SHOREHAM	1 mile from Shoreham railway station				
182/198 : TQ 203055 : Sussex : 191 acres : 1100 x 650 yards : 10 feet amsl.					
Site of HH Pifford's biplane trial flight 1910 : Private aerodrome for the Shoreham School of Flying, the Pashley School, the AV Roe School, the Chanter School and the Sussex County Aero Club 5.1911 – 8.1914 : Training Squadron Station, HD Station and School RFC/RAF 8.1914 – 2.1920 : HD NLG 2nd for 78 (HD) Sqn RFC 9.1916 – 9.1917.					
Three aeroplane sheds, 130 x 80 feet, three aeroplane sheds, 50 x 45 feet, and six aeroplane sheds, 45 x 45 feet.					
3 RAS/RS/TS	21.1.1915	from	Netheravon	15.7.1918	to Eastburn and 21 TDS
14 Sqn	3.2.1915		formed with nucleus ex 3 RAS	11.5.1915	Hounslow
21 RS nucleus	22.5.1916		formed	12.7.1916	en-route for Egypt
86 Sqn	1.9.1917		formed with nucleus ex 3 TS	17.9.1917	Wye
86th Aero Sqn USAS*	25.3.1918		USA	11.8.1918	?
SE Area Flying Instructors School	29.8.1918		Manston	31.3.1919	disbanded
94 Sqn	27.7.1918		Harling Road	19.8.1918	Upper Heyford
122 Sqn nucleus flight	10.1918		reformed	29.10.1918	Upper Heyford
82 Sqn cadre*	15.2.1919		Bertangles (F)	5.1919	Tangmere
2 Sqn CAF (123 Sqn)	31.3.1919		Upper Heyford	5.2.1920	disbanded (on numberplate basis from 6.1919)
1 Sqn CAF (81 Sqn)	2.5.1919		Upper Heyford	28.1.1920	disbanded (on numberplate basis from 6.1919)
1 (Canadian) Wing HQ*	1919		formed	1.1920	disbanded
Note – 129 Sqn was intended to re-form at Shoreham on 3.9.1918 but the plan was abandoned.					
Temporary Mobilisation Station and School, SE Area, 1918 : 1 (Canadian) Wing 1919					

SHOTLEY	1 mile across Harwich harbour and then 10 miles from Ipswich railway station				
150/169 : TM 240343 : Suffolk : 5 acres.					
Kite balloon station for four balloons RNAS/RAF 1917 – 1919.					
Four canvas balloon hangars, 100 x 36 feet.					
KB Station Shotley	1917	from	formed	1.4.1918	to re-designated 12 Balloon Base
12 Balloon Base	1.4.1918		formed ex KB Station Shotley	1919	disbanded (after 5.1919)
Commander-in-Chief, Harwich RNAS : 70th Wing, 4 (Operations) Group, SE Area 1918					

SHREWSBURY (Monkmoor)	2 miles from Shrewsbury railway station				
118/126 : SJ 516134 : Shropshire : 106 acres : 850 x 550 yards : 190 feet amsl.					
School and Storage Station RFC/RAF 1917 – 1919 : Listed as unavailable for civilian use 22.1.1920.					
Six 1918 pattern GS Sheds, 170 x 100 feet, as three coupled units.					
14 AAP Storage Section	1918		formed under 14 (Castle Bromwich) AAP	5.1920	disbanded
Observers School of Photo, Maps & Recce	19.10.1918		formed	2.5.1919	disbanded
14 AAP cadre*	4.1920		Castle Bromwich	5.1920	disbanded
Note : The North Western ARD, later 7 (North Western) ARD, and 2 (POW) MT Repair Depot were not on this site, but on one at Harlescott, a mile to the NW. Two of the Monkmoor GS shed units still survive.					
15 Group, 3 Area 4.1918 : 13 Group, Midland Area by 11.1918 : 7th Wing by 1.1920					