

GAZETTEER OF FLYING SITES IN THE UK & IRELAND

by Mick Davis & Bill Morgan **Part 2**

Abbreviations have been avoided wherever possible and those that are included should be self explanatory, such as the suffix letters added to stations abroad.

Symbols used are as follows:

* = Ground stations and non-flying units. It should be noted that the large number of USAS units fell into the latter category and comprised administrative and maintenance personnel only, attached to RFC/RAF units for training.

† = Night Landing Grounds taken up but not ready for use by April 1916.

‡ = Night Landing Grounds taken up but not provided with lighting by October 1916.

Reserve Aeroplane Squadrons were re-designated as **Reserve Squadrons** from 13.1.1916 and then as **Training Squadrons** from 31.5.1917. The function Training Squadron Station includes not just these, but also service squadrons employed in a training capacity.

The function was dropped from **Home Defence** squadron titles from 1.11.1917 with, for example, **39 (HD) Squadron** being re-titled **39 Squadron**. It has, however, been retained for units already in existence on that date.

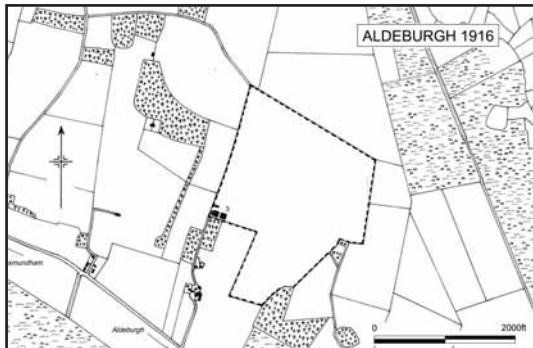
The key for sheds and hangars shown on the site plans is as follows:

- 1 1912 pattern aeroplane shed 65 x 70ft
- 2 1913 pattern transportable hangar
- 3 Miscellaneous types of RNAS/RFC aeroplane/seaplane shed
- 4 1915 pattern RFC flight shed 210 x 65ft
- 5 1915 pattern RFC flight shed 140 x 65ft
- 6 1916 pattern RNAS aeroplane/seaplane shed 180 x 60ft
- 7 1916 pattern GS shed 170 x 80ft
- 8 HD pattern flight shed
- 9 1917 pattern timber GS shed, early style 170 x 80ft
- 10 1917 pattern timber GS shed, later style, 170 x 80ft
- 11 RNAS Type F aeroplane/seaplane shed 200 x 100ft
- 12 Bessonneau hangar
- 13 RNAS Type G shed
- 14 1918 pattern GS shed, 170 x 100ft
- 15 1918 pattern GS shed , 125 x 70ft
- 16 1918 pattern GS shed, 170 x 100ft (Esavian doors)
- 17 Handley-Page storage shed, 200 x 60ft
- 18 Handley-Page erecting shed
- 19 Non-rigid airship shed
- 20 Rigid airship shed
- 21 Rigid airship shed (coupled)
- 22 Kite balloon hangar, 100 x 36ft

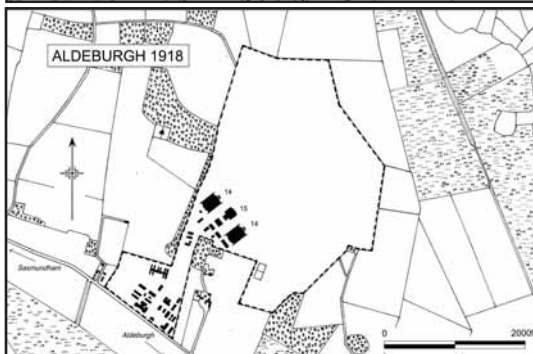
ACKLINGTON see **SOUTHFIELDS**

ACTON	Park Royal railway station nearby
160/176 : TQ 195820 : Middlesex (London Borough of Brent).	
Private school aerodrome for Ruffly Baumann, ex Hendon, 1917 - 7.1918. Manufacturers' aerodrome for the Alliance Aeroplane Co 1918 - 1919 and Waring & Gillow 1919, both producing DH9s.	

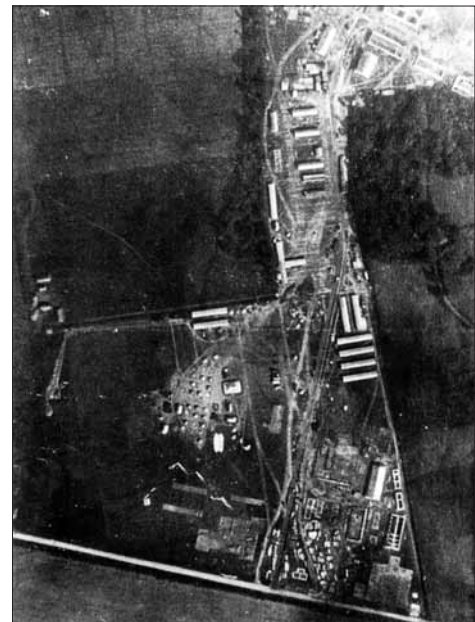
AINTREE RACECOURSE	
100/108 : SJ 374983 : Lancashire (Merseyside).	
Examination Ground RFC 1916 : Manufacturers' aerodrome for National Aircraft Factory No.3 and the Cunard Steamship Co Ltd , producing Bristol F2Bs, 1918 - 1919.	
8 th Wing, Western Group Command 1916	



ALDEBURGH 1916
The RNAS sub station was on common land to the north west of the settlement of Aldeburgh. The woodland, to the west and south of the site was an obvious hazard; some of the trees were 60ft high. Landing was restricted to the central part of the site, avoiding potholes to both the north and south.



ALDEBURGH 1918
Despite the limitations of the site, it was developed, during 1918, into a permanent aerodrome to house the School for Anti Submarine Inshore Patrol Observers. The boundary was extended to the north and west and land to the south west was requisitioned for the administrative and domestic buildings. Permanent 1918 pattern GS sheds were erected, as two coupled units with a single to house the ARS. This was unique in comprising only 11 bays and had a wider than standard plane store attached. The potholed land near the southern boundary was used as a machine gun range.



The layout of the administrative and domestic site at Aldeburgh in this photograph, taken during 1918, is at slight variance with the 1918 site plan. : via M. Davis

ALDEBURGH		2 miles from Aldeburgh railway station				
137/156 : TM 442593 : Suffolk: 105 acres : 850 x 800 yards : 60 feet amsl.						
HD NLG RNAS 8.1915 - 1918 (sub-station to Yarmouth) : Training Depot Station (under construction but never used as such) 4.1918 : Flying School RAF 8.1918 - 9.1919.						
Four 1918 pattern GS Sheds (Esavian), 170 x 100 feet, as two coupled units, plus one 1918 pattern GS Shed 135 x 100 feet (with Plane Store) for an ARS.						
SASIPO	8.1918	from	formed	10.1919	to	re-designated Marine Observers' School
Marine Observers' School	10.1919		formed ex SASIPO	1.1.1919		re-designated 1 Marine Observers' School
1 Marine Observers' School	1.1.1919		formed from existing Marine Observers' School	9.1919		disbanded
The School for Anti-Submarine Inshore Patrol Observers was formed to provide such trained aircrew to the Marine Operations squadrons that had hitherto used available and unqualified personnel of all ranks.						
Commodore i/c Lowestoft Naval Base RNAS : 3 Group, 1 Area 4.1918 : 70 th Wing, SE Area 1918						